

3.11 | Pocket Parks

Design Principles

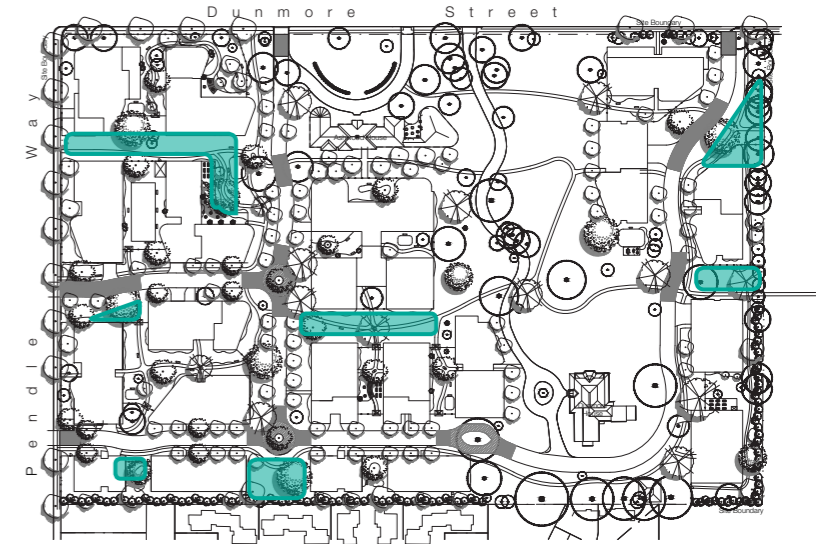
- Publicly accessible space
- Path network with a variety of activities including playground and shaded seating areas.
- Combination of evergreen and deciduous trees to provide seasonal interest while maintaining winter solar access
- Communal BBQ and dining spaces under pergola.



Communal gathering spaces with shade element



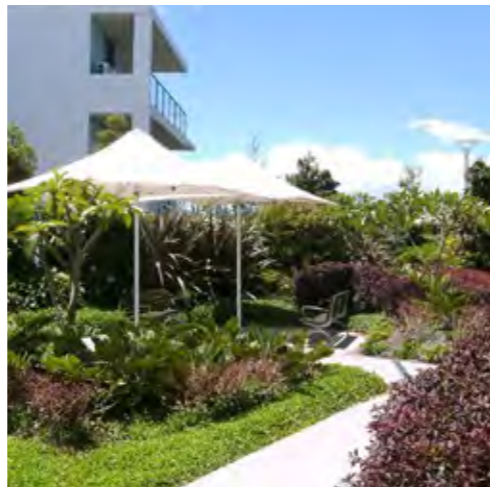
Provide active open spaces for community use



3.12 | Private Courtyards and Gardens

Design Principles

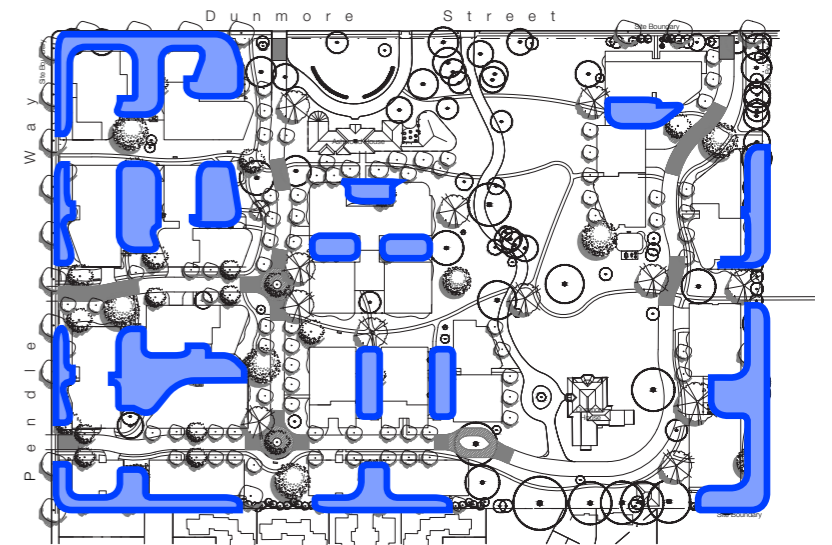
- Private area for seniors residence with gardens, outdoor dining, productive gardens and activity spaces
- Locked fences for privacy and security.
- Sensory planting for seasonal interest and health and wellbeing benefits.



Textural planting, seating and shade



Fenced courtyards for privacy



Masterplan



03

Masterplan



Internal Driveway
Provides visual break and appreciation of feature trees

Residential open space
Private green open space within building clusters

Street Trees
New street tree planting to verge

Entry Sequence and Open Space
Pocket park with feature trees

Tree Lined Streets
Offset with large specimen trees in reliefs

Pocket parks
Public open space with textural and seasonal planting, and play elements

Entry Sequence and Open Space
Pocket park with feature trees

Rose Garden
To Ashwood House drive to enhance heritage values

Buffer Tree Planting
Hymenosporum flavum (Native Frangipani) trees buffer between rear of Ashwood House and RACF






Central Play Space
General community use, with variety of activities, seating, shade and amenities

Pocket parks
Public open space to provide green link to former Bonds Spinning Mills site

Existing trees retained
Visual and physical protection to adjacent Bonds Site

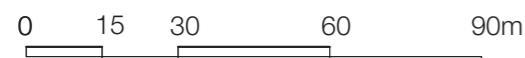
Rooftop Terraces
For residential access, with small trees and palms.

Legend

-  Existing Trees Retained
-  Proposed Deciduous Trees
-  Proposed Evergreen Trees
-  Roads
-  Pedestrian Footpaths



SCALE 1:1500 @ A3



03.02.2020

Detail Plan - Private Courtyards and Public Pocket Parks



Feature Jacaranda Tree
Provides seasonal interest and vibrant colour to pocket park

Playground
With nature play, garden beds, and shade element over

Existing trees retained
Provides shade and scale

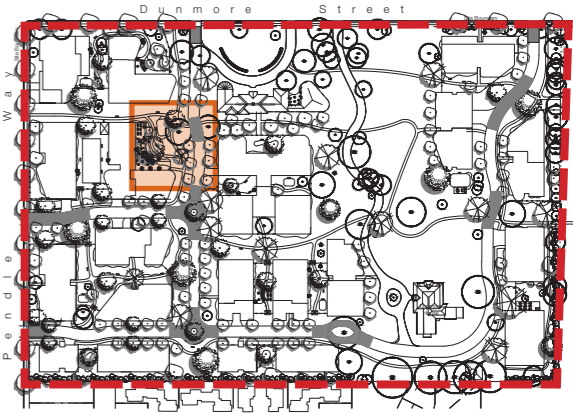
Productive Garden
To private courtyard with garden shed

Garden Bed with Feature Pine Tree
Provides greenery and screening between public pocket park and private courtyard.

Feature Evergreen Tree
Within junction of path to provide interest and shade.

Private Courtyard
With BBQ, dining facilities, water feature and shade structure. Fencing to separate individual private courtyards

Fencing to Private Courtyards
With lockable gate entry from common public areas.



Natural play area with native textural planting



Feature Jacaranda for seasonal interest and shade

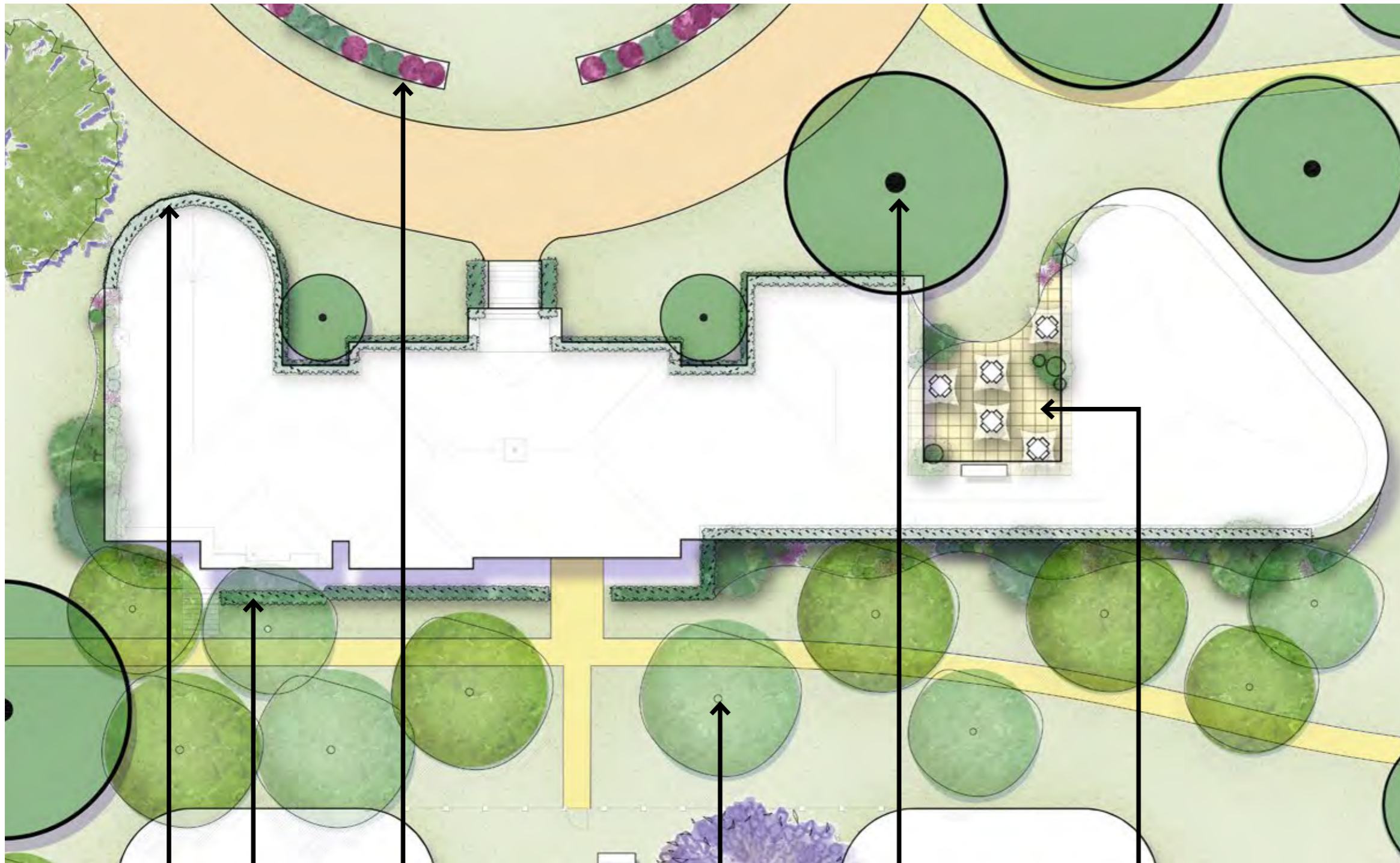


Outdoor dining with pergola for residents

SCALE 1:200 @ A3



Detail Plan - Ashwood House



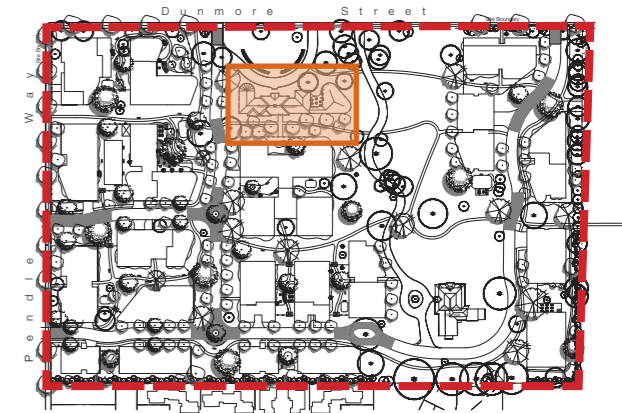
Hedging Planting
To perimeter of Ashwood House.

Rose Garden
To front of Ashwood House to provide heritage amenity

Native Frangipani Avenue
Provides green buffer between Ashwood House and RACF

Existing heritage trees retained
Provides shade and amenity

Cafe and Garden
Open to public, with outdoor seating.



KEY PLAN NTS



Avenue of native Frangipani



Rose planting to front of Ashwood House

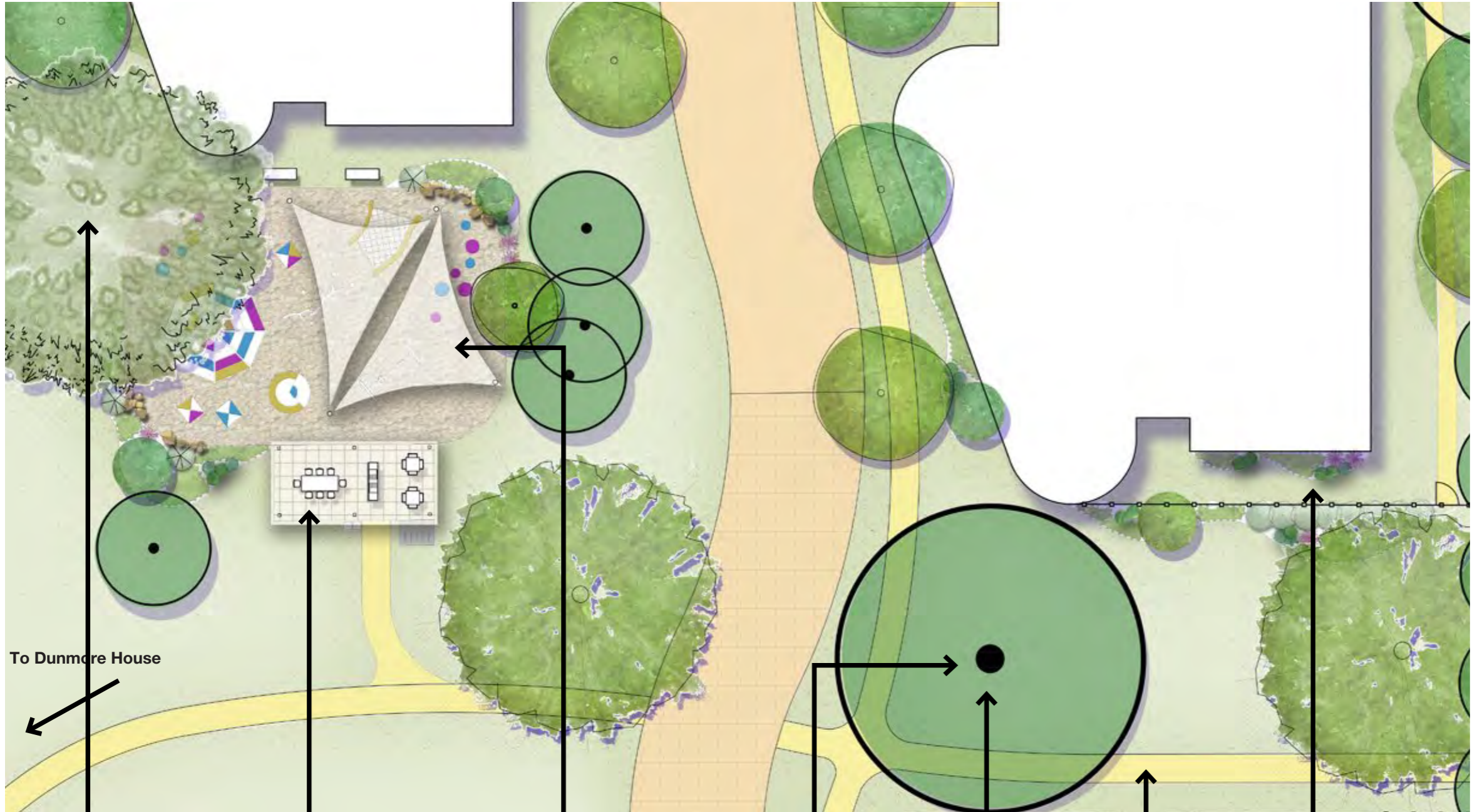


Community cafe and garden

SCALE 1:250 @ A3



Detail Plan - Dunmore House Playground



New Araucaria Pine Tree
As feature to heritage curtilage

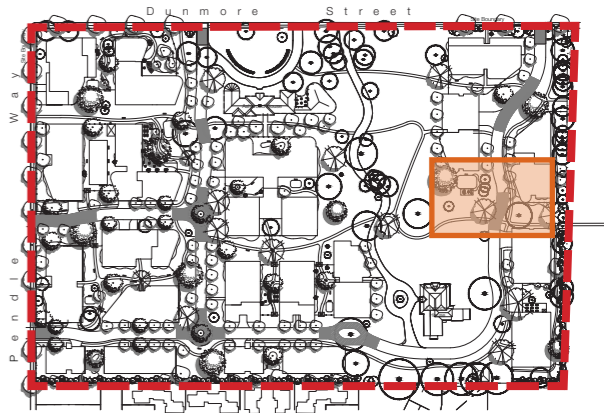
Large Shade Structure
With BBQ and fixed furniture for communal public dining

Playground
With nature play, garden beds, and shade element over

Existing heritage trees
Provides shade and amenity

Pedestrian Footpath
Access to former Bonds Spinning Mills redevelopment

Private Garden
With lockable gate entry from common public areas and fencing within to separate individual private courtyards.



KEY PLAN NTS



Fencing and textural planting to separate private courtyards



Pedestrian footpaths and planting

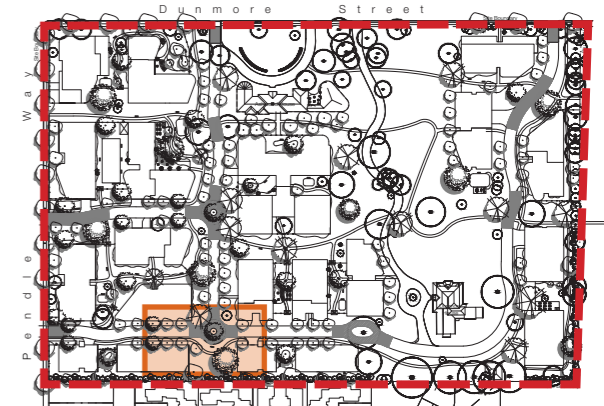
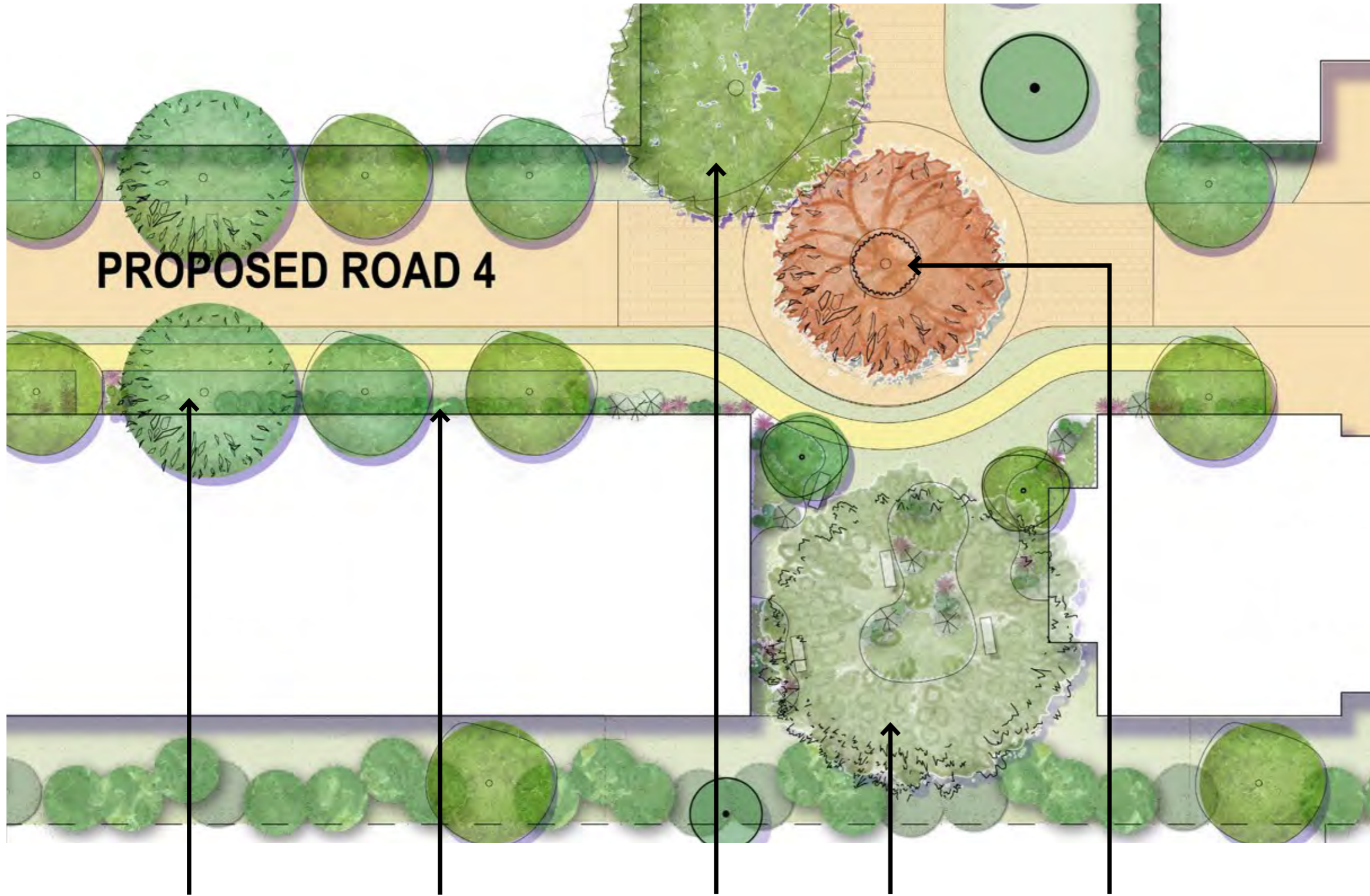


Playground with natural elements

SCALE 1:250 @ A3



Detail Plan - Streetscape



KEY PLAN NTS



Feature deciduous tree to road junction



Shared streetscape with evergreen trees



Meandering path to pocket path

Evergreen Street Trees
Provides shade and scale to built form

Shrub and Groundcover Planting
To edge of built form to act as screen and provide greenery

Large Feature Evergreen Tree
To screen built form and provide greenery

Pocket Park
With meandering path, shade trees, textural planting and seating elements

Deciduous Tree to Road Junction
Wayfinding measure and feature element.

SCALE 1:250 @ A3



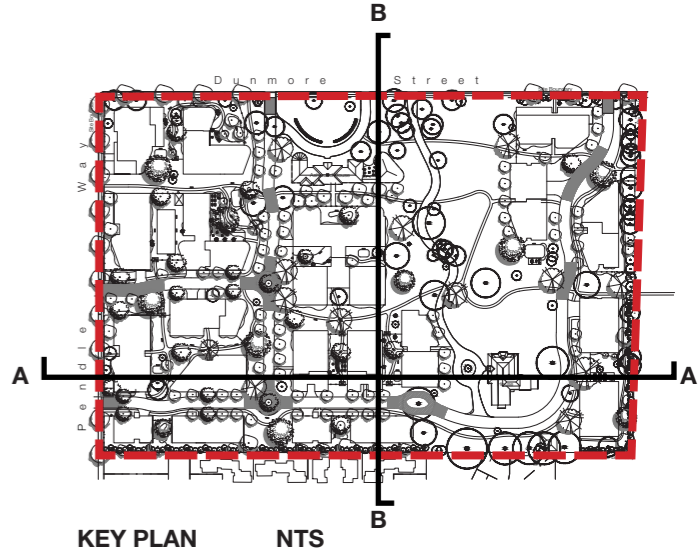
Site Sections - Streetscape



Section A



Section B



SCALE 1:1000 @ A3

Indicative Planting Character

Trees



Araucaria cunninghamii
Hoop Pine



Hymenosporum flavum
Native frangipani



Calodendron capense
Cape chestnut



Cedrus atlantica
Atlas cedar



Betula pendula
Silver birch



Malus floribunda
Crab apple

Shrubs



Pittosporum silver sheen
Silver pittosporum



Laurus nobilis
Bay tree



Hydrangea quercifolia
Oak leaf hydrangea



Buxus japonica
Japanese box



Rosa cv.
Roses



Lavendula cv.
Lavender



Juniperus chinensis
Chinese juniper



Plectranthus argentatus
Silver plectranthus

Groundcovers



Anemone hupphensis
Windsong lilly



Juniperus communis
Groundcover juniper



Viola hederacea
Native violet



Convolvulus mauritanicus
Blue convolvulus



Artemisia powis castle
Wormwood



Convolvulus cneorum
White convolvulus



Salvia Midnight blue
Blue salvia



Helichrysum petiolare
Licorice plant



Vinca cv.
Vinca