

Translations in your *language*Watch the video in your language
www.cumberland.nsw.gov.au/rates

Simplified Chinese

纳税人重要须知

市政府正在就一项关于调整Cumberland市地方政府管辖区市政稅的提议广泛征求纳税人意见。自2016年Cumberland市政府由3个市政府（Holroyd、Auburn和Parramatta的一部分）合并成立以来，Cumberland市地方政府管辖区一直实行3种不同的市政稅标准。因合并后新增40,000居民、成本上涨和收入损失，Cumberland市政府必须考虑各种选择方案，以确保财政的可持续性，继续提供和维护社区设施及服务。

现就2个拟议方案征求您的反馈意见。请访问我们的网站 www.cumberland.nsw.gov.au/rates，观看这些方案的讲解视频。您也可以致电131 450联系翻译与传译服务处，然后要求他们接通市政府电话（02）8757 9000咨询相关问题。

Turkish

Emlak vergisi ödeyecekler için önemli bilgiler

Belediye, Cumberland Yerel Yönetim Bölgesindeki emlak vergilerinde ayarlama yapma önerisi hakkında görüşlerinizi almak istiyor. Cumberland Belediyesinin 2016 yılında daha önceki 3 Belediyenin (Holroyd, Auburn ve Parramatta'nın bir kısmı) bir birleşimi olarak kurulmasından bu yana Cumberland'da 3 farklı emlak vergisi yapısı bulunmaktadır. Birleşme sonucunda 40.000 yeni sakinin eklenmesi, maliyetlerin artması ve gelir kaybı nedeniyle Cumberland Belediyesinin mali açıdan sürdürülebilirliği, korumaya ve topluma yönelik olanakları ve hizmetleri sunmaya devam etmesini sağlayacak seçenekleri değerlendirmesi önemlidir.

Tavsiye ettiğimiz 2 seçenekle ilgili görüşlerinizi almak istiyoruz. www.cumberland.nsw.gov.au/rates adresine giderek bu seçeneklerin açıklandığı videoyu izlemenizi rica ediyoruz. İsterseniz 131 450'den Yazılı ve Sözlü Çeviri Servisi'ni (Translating and Interpreting Service) arayıp sorularınız için (02) 8757 9000'den Belediye'ye bağlanmak istediğinizi belirtebilirsiniz.

You can contact the Translating and Interpreting Service (TIS) on 131 450 and ask them to call Council on (02) 8757 9000 to speak to someone in your language.

Find out more and Have Your Say!

We're inviting residents to book a phone information session to ask questions and to find out more about the options.

BOOK A ONE ON ONE PHONE SESSION:
(02) 8757 9000

OR

BOOK ONLINE:
www.cumberland.nsw.gov.au/ratesCONTACT COUNCIL ABOUT THIS MATTER BY EMAIL AT:
rates.harmonisation@cumberland.nsw.gov.au


If you require assistance or have further questions contact our Customer Service Team on: (02) 8757 9000

Arabic

معلومات مهمة لدافعي الضرائب

يسمى المجلس للحصول على ملاحظتك حول اقتراح بشأن تعديل رسوم المجلس في أرجاء منطقة الحكومة المحلية بمدينة كمبرلاند. منذ تأسيس مجلس مدينة كمبرلاند في عام 2016 من 3 مجالس سابقة (هولرويد وأوبورن وجزء من باراماتا)، ظلت هناك 3 هياكل مختلفة لرسوم المجلس في أرجاء مدينة كمبرلاند. ومع ازدياد عدد السكان بواقع 40,000 نسمة إضافية، وزيادة التكاليف وفقدان الدخل نتيجة الاندماج، صار من المهم لمجلس مدينة كمبرلاند أن يبحث عن خيارات للاستدامة المالية وأن يستمر في تقديم والحفاظ على المرافق المجتمعية والخدمات.

هناك خياران مقترحان نسعى للحصول على ملاحظتك بشأنهما. يرجى زيارة موقعنا الإلكتروني www.cumberland.nsw.gov.au/rates حيث يمكنك مشاهدة مقطع فيديو يشرح هذه الخيارات. ويمكنك أيضا الاتصال بخدمة الترجمة التحريرية والشفوية على الرقم 131 450 وتطلب منهم توصيلك بالمجلس على الرقم 8757 9000 (02) ليخبرك على أية أسئلة لديك.

Korean

납세자에게 중요한 정보

카운슬은 컴벌랜드 시 정부 관할지역의 지방세 조정안과 관련해 여러분의 의견을 구하고 있습니다. 2016년 기존의 3개 카운슬 (홀로이드, 어번, 파라마타 일부)을 통합한 컴벌랜드 시 카운슬이 설립된 이후 컴벌랜드 시에는 3가지 다른 지방 세제가 공존해 왔습니다. 통합으로 인해 4만 명의 주민이 새로 늘어나고 비용 증가와 세수 손실이 발생한 지금, 컴벌랜드 시 카운슬은 재정적 지속 가능성을 보장하며 지역사회 시설 및 서비스를 제공하고 유지할 수 있는 방안을 검토해야 합니다.

카운슬은 2가지 제안에 대해 여러분의 의견을 구하고자 합니다. 카운슬 웹사이트 www.cumberland.nsw.gov.au/rates에서 해당 제안을 설명하는 동영상과 보실 수 있습니다. 통번역 서비스 전화 131 450 번으로 연락하신 후 카운슬 전화 (02) 8757 9000번으로 통화를 요청하시면 궁금한 사항에 대한 안내도 받으실 수 있습니다.

RATES

HARMONISATION

For more information visit
www.cumberland.nsw.gov.au/ratesDO YOU OWN
PROPERTY IN THE
CUMBERLAND LOCAL
GOVERNMENT AREA?

Cumberland City Council
is seeking your *feedback*
on proposed changes to
your ratesTo Have Your Say visit:
haveyoursay.cumberland.nsw.gov.au/ratesWhy does Council need
to introduce new rate
structures?

Following amalgamation, Cumberland City Council inherited three different rates structures for the Local Government Area (LGA).

As a result, there is inconsistency in the way rates are calculated and we are now legally required to develop a plan to transition all rate payers onto a single structure.

Council is inviting community feedback on the two options being considered to align the three former Council areas into one rates structure.

One of these options addresses only the issue of rates harmonisation and the other option addresses both rates harmonisation and Council's current and future financial sustainability.

This document outlines the two options and the impacts of each option on rate payers, as well as providing you with details about where to get more information and Have Your Say on your preferred option.

IMPORTANT

Cumberland City Council

16 Memorial Avenue, PO Box 42, Merrylands NSW 2160.
T 8757 9000 W cumberland.nsw.gov.au
E rates.harmonisation@cumberland.nsw.gov.au
f Cumberland City Council Sydney
@ [cumberlandcitycouncil](https://www.facebook.com/cumberlandcitycouncil)

RATES

HARMONISATION



Council will be looking to stage the harmonisation over a number of years to minimise the impact on rate payers.

There are 2 options for consideration.



1 Harmonise rates across Cumberland City

1

Harmonising the rates over 5 years, without proposing an additional increase to the rate income.

This option means that the current provision of community facilities will remain the same and upgrades to the facilities will be delayed even when population and demand increase.

2 An additional increase in the total rate for the first year

2

Harmonising the rates over 5 years, with the intention to increase the rate income over 5 years by \$10M.

This option of an increase in the rates income means the current provision of infrastructure such as community facilities and associated upgrades can keep up with increased population and demand over the coming years.

RESIDENTIAL
RATE PAYER

Current average annual rate: **\$986**

	CURRENT AVERAGE	WITH YEAR 1 CHANGES	DIFFERENCE YEARLY
HOLROYD	\$1,102	\$1,101	-\$1
PARRAMATTA	\$929	\$971	\$41
AUBURN	\$812	\$865	\$53
CUMBERLAND	\$986	\$1,010	\$25

BUSINESS
RATE PAYER

Current average annual rate: **\$7,374**

	CURRENT AVERAGE	WITH YEAR 1 CHANGES	DIFFERENCE YEARLY
HOLROYD	\$8,706	\$8,706	-
PARRAMATTA	\$6,475	\$6,540	\$65
AUBURN	\$6,014	\$6,435	\$421
CUMBERLAND	\$7,374	\$7,558	\$184

RESIDENTIAL
RATE PAYER

Current average annual rate: **\$986**

	CURRENT AVERAGE	WITH AN ADDITIONAL INCREASE FOR YEAR 1 ONLY*	DIFFERENCE YEARLY
HOLROYD	\$1,102	\$1,128	\$26
PARRAMATTA	\$929	\$994	\$65
AUBURN	\$812	\$885	\$73
CUMBERLAND	\$986	\$1,030	\$44

BUSINESS
RATE PAYER

Current average annual rate: **\$7,374**

	CURRENT AVERAGE	WITH AN ADDITIONAL INCREASE FOR YEAR 1 ONLY*	DIFFERENCE YEARLY
HOLROYD	\$8,706	\$8,924	\$218
PARRAMATTA	\$6,475	\$6,702	\$227
AUBURN	\$6,014	\$6,585	\$571
CUMBERLAND	\$7,374	\$7,706	\$332

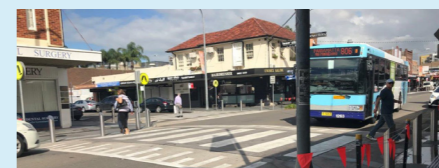
* The first year will include an additional 2% increase to the 2.5%

* The first year will include an additional 2% increase to the 2.5%

Your rates have contributed to these projects in 2020



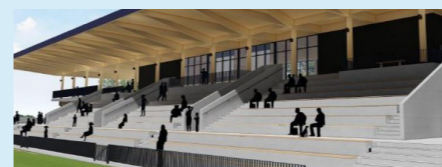
The Granville Centre



Town Centre Upgrades



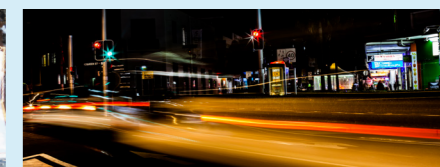
Wentworthville Pool



Granville Park - Community Sports Pavilion



Merrylands Stormwater Upgrade



Roads

Operational Income and Expenses

Council is now facing a number of cost pressures with providing services to the growing community, specifically to the operating and maintenance of assets as the gap between funding and receiving funds from rate payers becomes larger.

