



hear every voice, know where you stand

STRAIGHTTALK

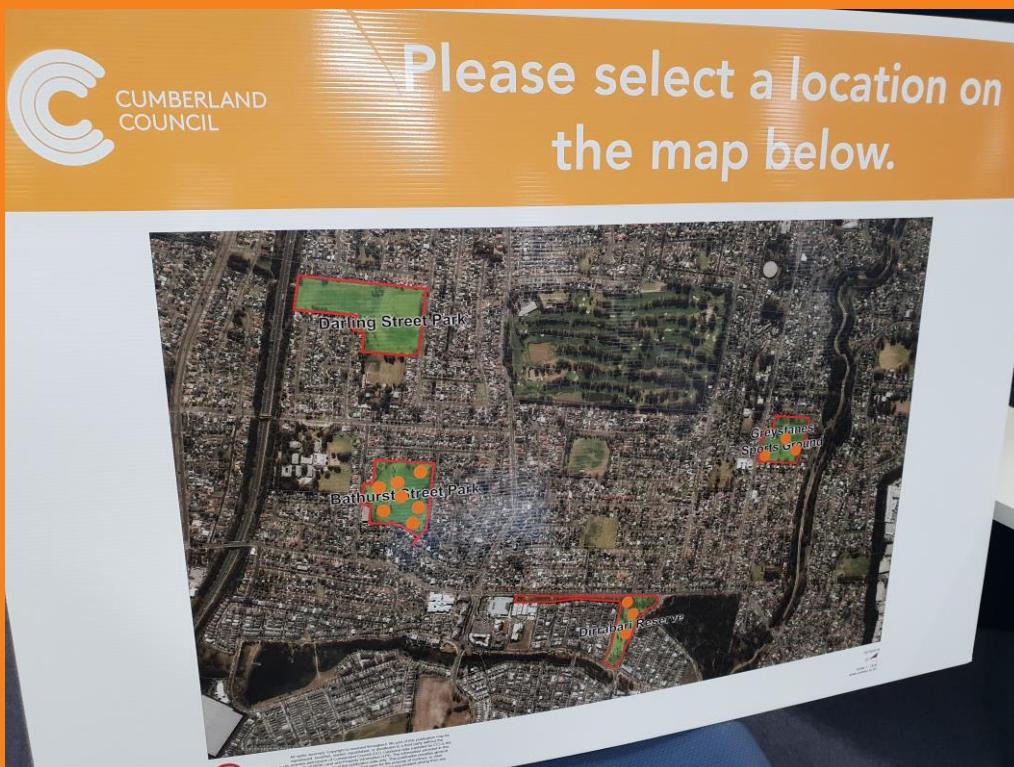
A member of RPS Group Plc

GREYSTANES SKATE PARK

Engagement Report

Report

November 2018



Contents

Introduction	2
Background	2
Methodology	2
Outcomes	2
Conclusion	5
Appendix A Workshop Table notes	6
Appendix B Have Your Say results	7

Document

Greystanes Skate Park
Engagement Report

Client

Cumberland Council

Prepared by

Matthew Armstrong

Reviewed by

Lucy Cole-Edelstein

Job number

18293

Date

20 November 2018

Version

1.00



Introduction

Straight Talk was engaged by Cumberland Council (Council) to assist in the facilitation of community engagement regarding the choice of location for a skate park in Greystanes. This report details the background context of the engagement, the methodology of engagement activities, and their outcomes.

Background

Council undertook community engagement in 2017, to determine the ideal location for a skatepark in Greystanes. Council was intending to construct the park with funds from a partnership grant, however, the partnership was not realised, resulting in the postponement of the project.

Recently, Council has initiated a new round of engagement to assess a location for a new skatepark, should it be built. There are four different sites for the community to choose from: Bathurst Street Park, Darling Street Park, Dirrabari Reserve, and Greystanes Sportsground. Skateparks frequently suffer strong negative community reactions due to stereotypes of antisocial behaviour. For this reason, Straight Talk was engaged to assist in the facilitation of a community forum regarding the selection criteria for the proposed locations.

Methodology

A community forum was held on Saturday 10 November, 2:30pm - 4:30pm, to provide the community of Greystanes with information about the park options and enable them to provide feedback. This meeting was organised and advertised by Council.

The meeting was opened by Council with a presentation regarding the project history and the different park options. Following the presentation, participants were broken into groups, to discuss what council should consider when evaluating the options. Participants then shared their discussion highlights with the other groups. Notes were taken at each of these tables, with the full record in Appendix A. Finally, Participants were recommended to visit the Have Your Say page and provide feedback there.

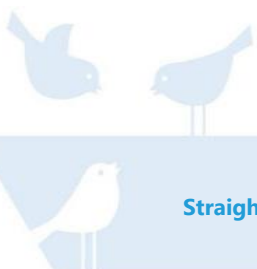
The Have Your Say page is available from 17 October 2018 until 23 November 2018, and hosts a survey for the community consisting of three questions:

1. Do you support a skate park in Greystanes?
2. If yes, which location do you prefer?
3. Please provide any comments.

Outcomes

Community forum

Thirteen people attended the forum held at the Allan G Ezzy Community Centre. While this is not representative of the wider community, it is still useful for establishing selection criteria for the proposed park. The thirteen participants were divided into three table groups to each discuss park selection criteria, and evaluate each park as a possible location.



Selection criteria

When asked for key park selection criteria, the groups discussed a range of options. Across the three tables, there was agreement that the following aspects should be considered:

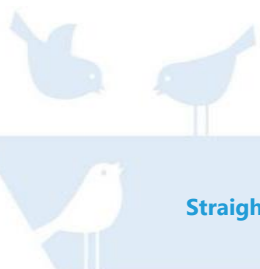
- 👉 Security, with an emphasis on lighting and visibility
- 👉 Access to amenities, specifically noting bathrooms, drinking water, and transport options
- 👉 Impacts to neighbours, highlighting noise and lighting, parking and accessibility, and the risk of vandalism.

There were several other criteria, discussed at individual tables, including the following:

- 👉 The cost of the park, both initial and maintenance costs
- 👉 Integration into existing park layout
- 👉 “Skateable” elements, and ensuring “competition standard”
- 👉 Shading
- 👉 Flood proofing
- 👉 Usage and demand.

Park evaluation

Each prospective park was then evaluated by the table groups. Due to time constraints, each table did not manage to discuss every park. The table below highlights the comments that the groups agreed or disagreed on for each park option.



School	Positive Comments	Negative Comments	Other comments
Bathurst Street Park This park was discussed by all three tables.	<ul style="list-style-type: none"> • Is close to school and local shops • Transport options are accessible • Secure with pedestrian through traffic • One table called this park "[the] best location for the skate park". 	<ul style="list-style-type: none"> • Not central to Greystanes • Consistency of Lighting through the whole park an issue • Concern of over utilisation due to high accessibility • Concern about proximity to alcohol. 	<ul style="list-style-type: none"> • Differing opinions on proximity to residents, one table believed it was not close to residents, another believed it too close.
Dirrabari Reserve This park was discussed by all three tables.	<ul style="list-style-type: none"> • Public transport access is good • Proximity to existing playground good for security. 	<ul style="list-style-type: none"> • Lack of amenities and bathrooms • More isolated than Bathurst Street • Lack of lighting • Not close to high school. 	<ul style="list-style-type: none"> • Proximity to shops is in contention, one table suggested that it is "close to shops - but alcohol is there" • There is a need for a dog park.
Greystanes Sportsground This park was discussed by two tables.	<ul style="list-style-type: none"> • Accessible via foot traffic, public transport and has parking for cars • Has a drinking fountain • Not close to residents • Close to schools and kids play area. 	<ul style="list-style-type: none"> • Prone to flooding • Lack of amenities, including lights, barbecues, or shade • Currently prone to vandalism • Too close to a busy road. 	No other comments.
Darling Street Park This park was discussed by two tables	<ul style="list-style-type: none"> • Accessibility is good with street parking, and proximity to High School • Amenity is good, with bathrooms and shade. 	<ul style="list-style-type: none"> • Isolated location, more anti-social behaviour • Less secure, with no lighting • Too far from shops, and public transport • No space for smaller kids, d the primary school does not want it • According to one table the location floods. 	No other comments.



Have Your Say

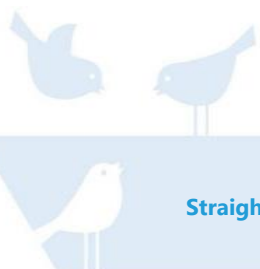
While the survey is not closed, the below is based on results gathered up to 16 November 2018. The survey has been answered by 34 participants, which is not necessarily representative of the wider community. These results are available in Appendix B.

Of those who have participated, the majority of participants supported a new skate park (26). The choice of location question only showed a rejection of one location, with Dirrabari Reserve receiving two votes. The other three locations received seven or more votes.

The open-ended segment, 'Please provide any comments', has been answered by 21 participants. The majority of comments were providing reasons for or against a specific park, e.g. "Darling street park is isolated, has no direct public transport or shops. Dirrabari reserve, is not isolated, has shops close by and is easily accessible via public transport." There were three responses that directly opposed a skate park, e.g. "Not needed!!!". There were also three responses that referred to the past engagement in 2017 that suggested Bathurst Street as the preferred location, "Why are we asking this question about do you want a skate park when community and council have already supported one. Why where again? Bathurst Street has been chosen by 2 consultants as the preferred location. The current Council resolution supports this."

Conclusion

The participants of these engagement activities have differing opinions on both the range of impacts, and how severe the impacts might be for any given park location. There is also lingering frustration as a result of the engagement held in 2017, and the lack of closure this engagement has presented. Council should, before confirming a park location, firmly establish selection criteria that will be robust and defensible to the local community.



APPENDIX A WORKSHOP TABLE NOTES



Greystanes Skate Park Community Forum – Saturday 10 November 2.30pm to 4.30pm

Workshop table notes

Table 1

Park selection criteria

- Security (to prevent vandalism)
- Lighting (would like lighting at night)
- Location – close to toilets/shops
- Budget (8 to 14 year olds will get older – future proofing/master plan)
- Accident on site (supervision – emergency access)
- Close to transport
- Integrate into existing park (e.g. playground, existing park, basketball court)
- “Skateable” elements – multifaceted park
- Adult facilities: café/ tea/coffee
- Parking is important
- Proximity to school (close but not on door step)
- Shade (concrete gets hot)
- Access to drinking fountains
- Noise is an issue – far enough away not to impact residents
- Other organised activities around “one stop shop”
- BBQ facilities
- Competition standard – good enough to host professionals
- Flood proof
- Active walking through it (passive supervision)
- CCTV/live webcam
- More likely kids on scooters
- Access to power

- 3-5km from Greystanes shops.

Questions outside of scope:

- Why did Bathurst Street fall out of the picture?
- Flood/skate park- kids play in the water and it's dangerous
- Really good facilities: Carnes Hill and Greenhill Skate Park

Dirrabari Reserve

Pros:

- Transport
- Existing playground
- BBQ

Cons:

- No toilets
- Isolated
- We need dog park
- No lighting
- Not secure
- No shops
- Not close to High School

Greystanes Sportsground

Pros:

- Located off Canal Walkway (foot traffic)
- Beautiful
- Close to transport (bus route)
- Small drinking fountain
- Parking

Cons:

- Flooding

- No shops
- Adjacent to busy road
- Not secure (current vandalism)
- No lighting
- Not part of integrated park
- No facilities for parents
- No BBQs
- Not close to High School
- Lack of shade

Darling Street Park

Pros:

- Toilets
- Shade
- Parking (Street parking)
- Close to High School

Cons:

- It floods
- No shops
- Too close to primary school (should be at the front of the park)
- No smaller kids playground
- Not close to transport
- Isolated – no foot traffic
- Not secure
- No lighting
- School do not want it
- Access to the park

- Will encourage High School kids to cross primary school grounds to get to the park.

Bathurst Street

Pros:

- Close to shops
- High School close by
- Other facilities – integrated sports
- Transport – bus stop
- Bubbler
- Toilets
- Primary school/parents facilities close by
- People walk through the park
- Secure: lots of foot traffic
- Good shade/cooling
- Good visibility
- Smaller kids playground already exists
- No flooding issue
- BBQ
- Well lit

Cons:

- Not central to Greystanes

Table 2

Park selection criteria

- Evidence based (usage/demand)
- Cost
- Aesthetics (design engagement needed) – need to consider other planning proposals
- Security/visibility
- Amenities
- Access
- Ability to maintain/sustainability
- Existing infrastructure
- Location
- Health and safety
- Recreation strategy
- Broader community use (should not happen in isolation)
- Too close to houses

Bathurst Street Park

- Poor visibility/security
- Too residential
- Proximity to alcohol
- Parking
- Toilets exist and need to be open
- Shops exist
- Access yes but over utilisation
- Poor infrastructure
- Close to school
- Has been user more broadly by community

Darling Street (site assessment not completed)

Dirrabari Reserve

- Offers Security/visibility, children's area, bike path.
- Amenities missing
- Transport hub – access is good
- Close to shops – but alcohol is there
- More security at the shops
- Medical centre
- Less residential than Bathurst Street

Greystanes Sports (site assessment not completed)

Table 3

Park selection criteria

1. Dirrabari Reserve – some distance to the market place for toilet facilities (medium concern – other sites have toilets).
2. No accessible parking or pick up and drop off of children by parents, particularly for Dirrabari Reserve
3. Skate parks can be noisy for nearby residents.
4. Dirrabari Reserve – is not the ideal site for a skate park due to lack of parking
5. Four granddaughters consider Greystanes as the preferred option.
6. Brother lives in QLD which backs onto a skate facility and advises there is nothing but trouble i.e. breaking up fights, yelling, asking for help.

Dirrabari Reserve

- No toilets, would need to build them

Bathurst Street/Greystanes Sports Ground

- Best location for the skate park
- Close to school, kids, pay area, shops, not close to residents, middle of park

Darling Street

- No shops, too close to residents
- Anti-social behaviour

Preferences:

1. Bathurst Street
2. GSP
3. Dirrabari Reserve/Darling Street

APPENDIX B HAVE YOUR SAY RESULTS



Survey Report

17 October 2018 - 15 November 2018

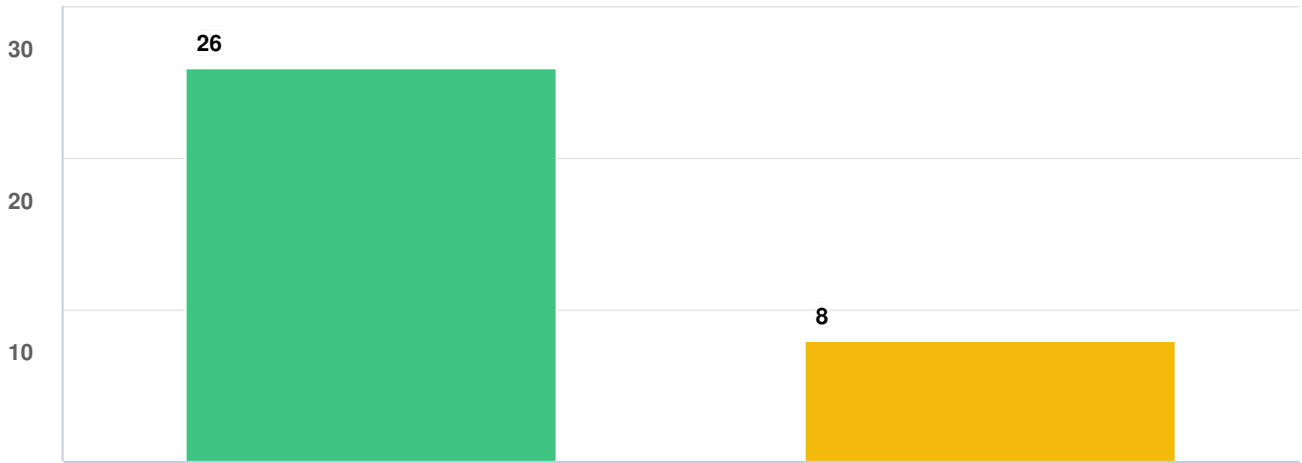
GREYSTANES SKATE PARK

PROJECT: Greystanes Skate Park - Community Forum

Have Your Say Cumberland

engagement 
by Bang the Table

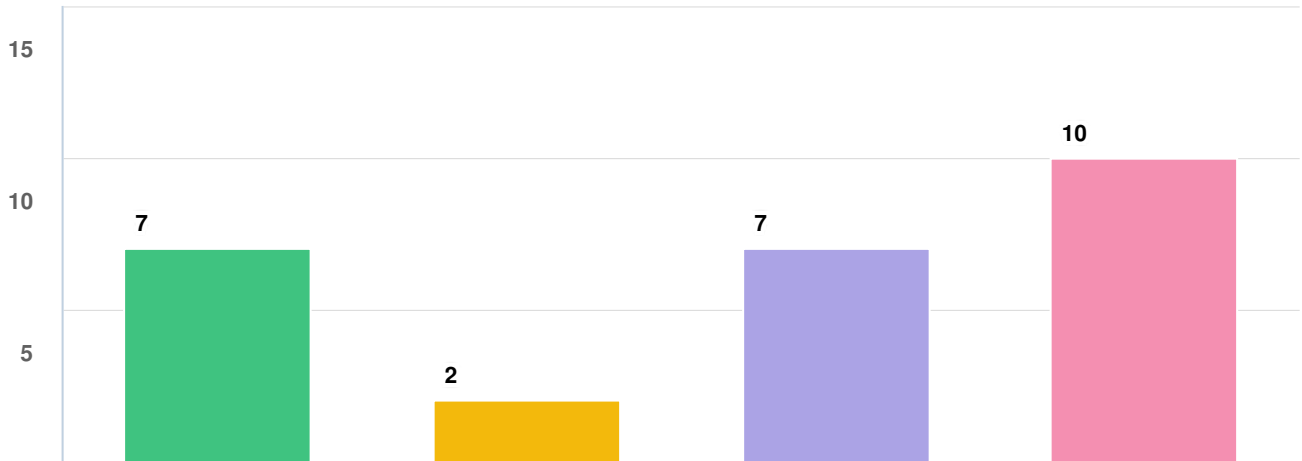
Q1 Do you support a skate park in Greystanes?



Question options

● Yes ● No
(34 responses, 0 skipped)

Q2 If yes, which location do you prefer?



Question options

● Bathurst Street ● Dirrbarri Reserve ● Greystanes Sportsground ● Darling Street
(34 responses, 0 skipped)

Q3 Please provide any comments:

Geoff2145

10/18/2018 02:07 PM

Darling Street Park requires minimal crossing of main roads for the majority of Greystanes residents.

skatekate

10/18/2018 02:37 PM

Why are we asking this question about do you want a skate park when community and council have already supported one. Why where again? Bathurst Street has been chosen by 2 consultants as the preferred location. The current Council resolution supports thi

Dawn Smith

10/18/2018 07:12 PM

Daisy street

JPollacco

10/18/2018 07:37 PM

Seems to be more unused space and less usage than some of the other locations.

Danf

10/18/2018 07:40 PM

But more importantly is to stop the hesitation, and talkfest. The council has been talking about this for many years. If it goes ahead it needs to be a full Park , not a prefab like Granville park.

Emir

10/23/2018 08:11 AM

Please add low down rails

Icedog

10/24/2018 09:54 PM

I don't believe it is the right facility for the proposed location.

Kaye Pearson

10/25/2018 09:38 PM

I don't think Darling Street is suitable due to its proximity to Beresford Road Public School. It is not visible from the road and is not accessible by public transport.

Cathyo

10/30/2018 09:05 PM

Not needed!!!

Kelly.brook2145

10/30/2018 09:41 PM

Darling street park is isolated, has no direct public transport or shops. Dirrabarri reserve, is not isolated, has shops close by and is easily accessible via public transport.

Sandra

10/31/2018 10:15 PM

Bathurst Street would be my next option then Greystanes SpGrnd

Brian

11/05/2018 03:43 PM

is not audible from residential areas .

Emmanagy

11/05/2018 08:46 PM

Biggest park out of all options

Jenny Nagy

11/05/2018 08:58 PM

This is the biggest park in Greystanes best accessible from Great Western. Less of impact on surrounding housing.

coluccpat

11/05/2018 09:38 PM

Has ample parking available

Kate

Council: you made a decision already. It was already the BEST one. Please

11/08/2018 09:19 AM

reinstate the decision.

zhwan

11/09/2018 07:01 PM

Very good location and enough space for recreating and gives a refreshment to the social interaction in the area

Rebecca Gatenby

11/11/2018 08:38 AM

A skate park will attract teenagers to hang out in groups without supervision and engage in drinking and other anti social behaviour. Skate parks in general attract local graffiti artists. This is not the right way to engage the youth in the area.

housewifeofgreystanes

11/13/2018 01:14 PM

My preferred location is Greystanes Sports Ground. Its on a main road, not tucked away in a dangerous, quite park. Busses are easy to catch, they would practically drop kids off right in front. Its just a central location for all kids in Greystanes.

01Acer4u

11/13/2018 04:16 PM

It brings youth crime, vandalism and trouble for local residents

Joanne Shaw

11/13/2018 07:48 PM

Better public transport, better lit and casual supervision of passers by and less noise and behaviour issues close to neighbours.

Optional question (21 responses, 13 skipped)

