

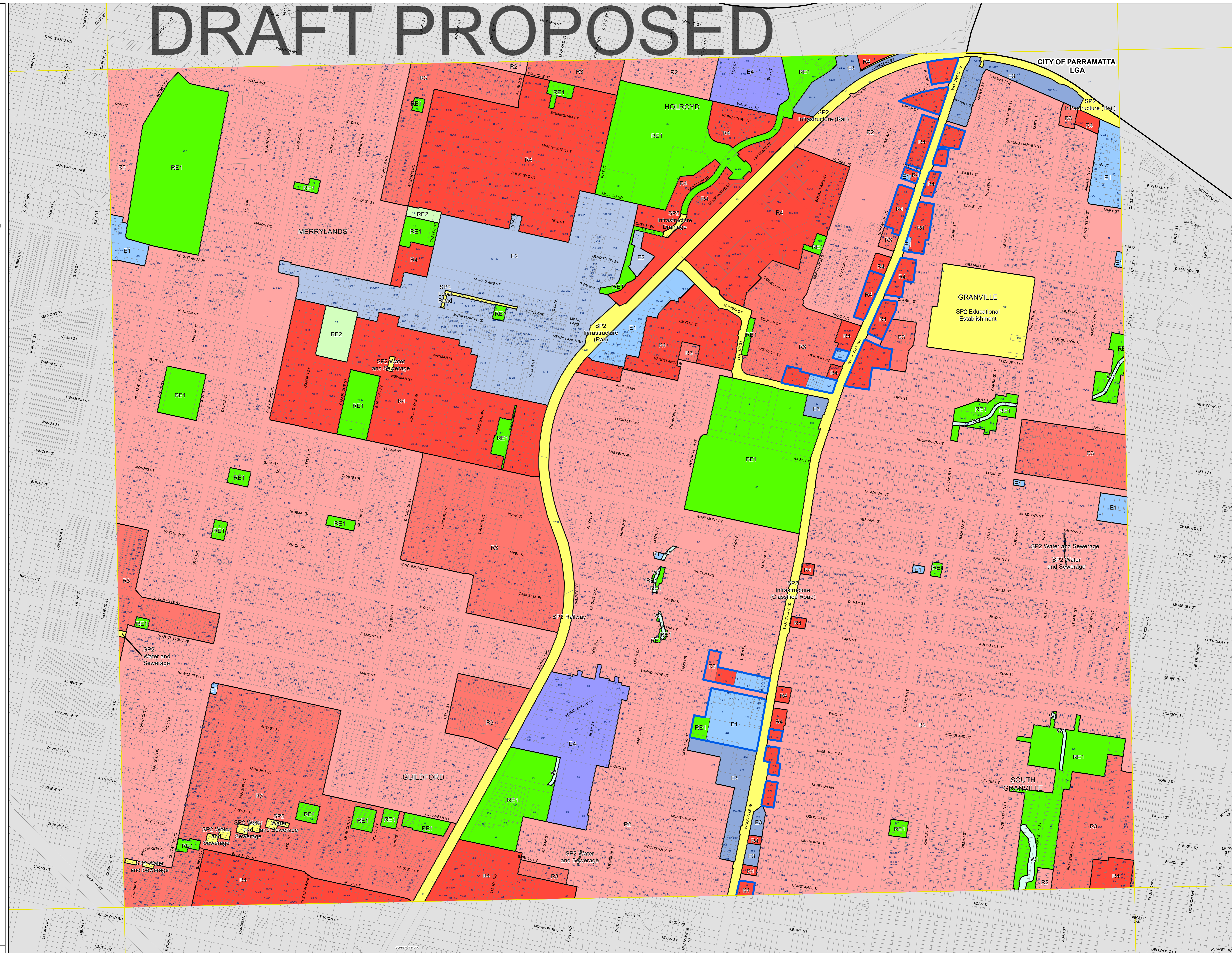
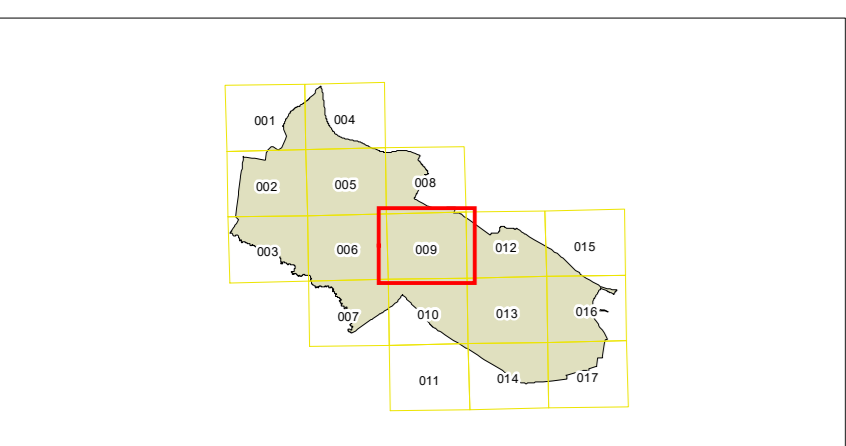
# DRAFT PROPOSED

CITY OF PARRAMATTA LGA

Land Zoning Map - Sheet LZN\_009

- Zone**
- E1 Local Centre
  - E2 Commercial Centre
  - E3 Business Development
  - E4 Enterprise Corridor
  - MU1 Mixed Use
  - C2 Environmental Conservation
  - R2 Low Density Residential
  - R3 Medium Density Residential
  - R4 High Density Residential
  - RE1 Public Recreation
  - RE2 Private Recreation
  - SP1 Special Activities
  - SP2 Infrastructure
  - W1 Natural Waterways
  - CRC SEPP (Precincts - Western CRC Parkland City) 2021
  - INE SEPP (Industry and Employment) 2021

- Cadastral**
- Cadastral 20/11/2024 © Spatial Services
  - Planning Proposal Sites

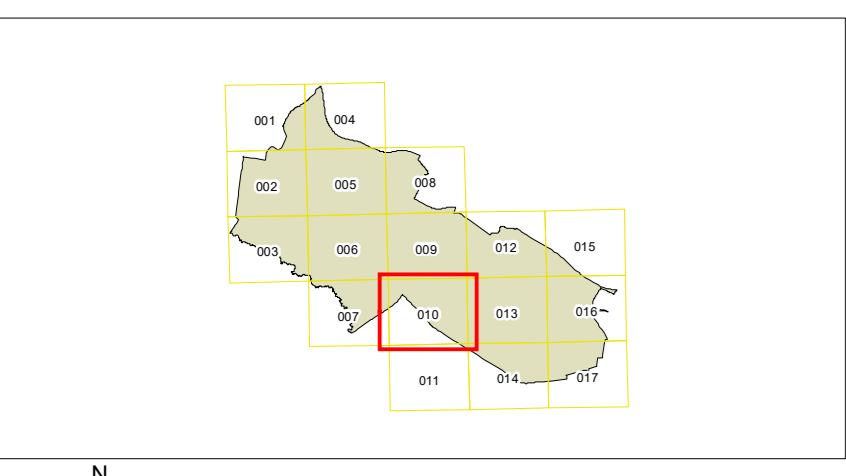


# DRAFT PROPOSED

Land Zoning Map - Sheet LZN\_010

- Zone**
- E1 Local Centre
  - E2 Commercial Centre
  - E3 Business Development
  - E4 Enterprise Corridor
  - MU1 Mixed Use
  - C2 Environmental Conservation
  - R2 Low Density Residential
  - R3 Medium Density Residential
  - R4 High Density Residential
  - RE1 Public Recreation
  - RE2 Private Recreation
  - SP1 Special Activities
  - SP2 Infrastructure
  - W1 Natural Waterways
  - CRC SEPP (Precincts - Western CRC Parkland City) 2021
  - INE SEPP (Industry and Employment) 2021

- Cadastral**
- Cadastral 20/11/2024 © Spatial Services
  - Planning Proposal Sites



Projection: GDA 1994  
 MGA Zone 58  
 Scale: 1:3,500 @ A0  
 Map identification number: 2380\_COM\_LZN\_Proposed 010\_010\_20241120

