

CUMBERLAND CITY COUNCIL DUCK RIVER ACTIVE TRANSPORT LINK SOUTH GRANVILLE NSW 2142



LOCALITY PLAN
N.T.S.

DRAWING SCHEDULE	
Sheet Number	Sheet Title
CC01	LOCATION PLAN & DRAWING SCHEDULE
CC02	GENERAL ARRANGEMENT PLAN
CC03	COMMUNITY CONSULTATION PLANS - PLAN 1 OF 3
CC04	COMMUNITY CONSULTATION PLANS - PLAN 2 OF 3
CC05	COMMUNITY CONSULTATION PLANS - PLAN 3 OF 3
CC06	TYPICAL SECTIONS
CC07	LIGHTING INFORMATION

THIS DRAWING IS TO BE VIEWED IN COLOUR AS SOME FEATURES / SYMBOLS ARE DIFFERENTIATED BY COLOUR. DRAWING NOT TO BE RELIED ON IF PRINTED IN GREYSKALE.

NOT FOR CONSTRUCTION

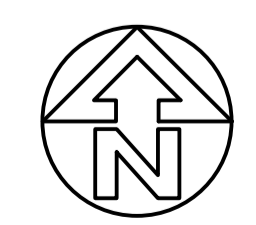
CUMBERLAND CITY COUNCIL

DUCK RIVER ACTIVE TRANSPORT LINK
SOUTH GRANVILLE NSW 2142
COMMUNITY CONSULTATION PLANS
LOCATION PLAN & DRAWING SCHEDULE

FILENAME:	PROJECT NUMBER	DRAWING NUMBER	REVISION
222052_CC01.DWG	222052	CC01	A



tonkin.com.au



SHEET SIZE
A1

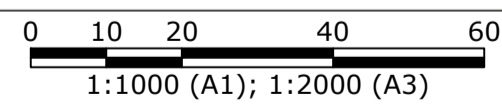
100mm ON ORIGINAL DRAWING - DO NOT SCALE DRAWING

COORDS: MGA2020 GDA2020 Z56
DATUM: ALL LEVELS TO A.H.D.
SCALE: N.T.S.
SURVEYED: PROJECT SURVEYORS
SURVEY DATE: 02.02.2023
APPROVED / PROJECT LEADER
NICHOLAS STEPHENS

REV	DESCRIPTION	DATE	DES.	DWN.
A	REVISED COMMUNITY CONSULTATION ISSUE AMENDMENT / REASON FOR ISSUE	14.08.23	NS	NS



THIS DRAWING IS TO BE VIEWED IN COLOUR AS SOME FEATURES / SYMBOLS ARE DIFFERENTIATED BY COLOUR. DRAWING NOT TO BE RELIED ON IF PRINTED IN GREYSCALE.



100mm ON ORIGINAL DRAWING - DO NOT SCALE DRAWING

SHEET SIZE
A1

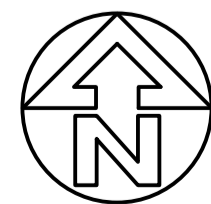
COORDS: MGA2020 GDA2020 Z56
DATUM: ALL LEVELS TO A.H.D.

SCALE: 1:1000

SURVEYED: PROJECT SURVEYORS
SURVEY DATE: 02.02.2023

APPROVED / PROJECT LEADER

NICHOLAS STEPHENS



tonkin.com.au

NOT FOR CONSTRUCTION

CUMBERLAND CITY COUNCIL

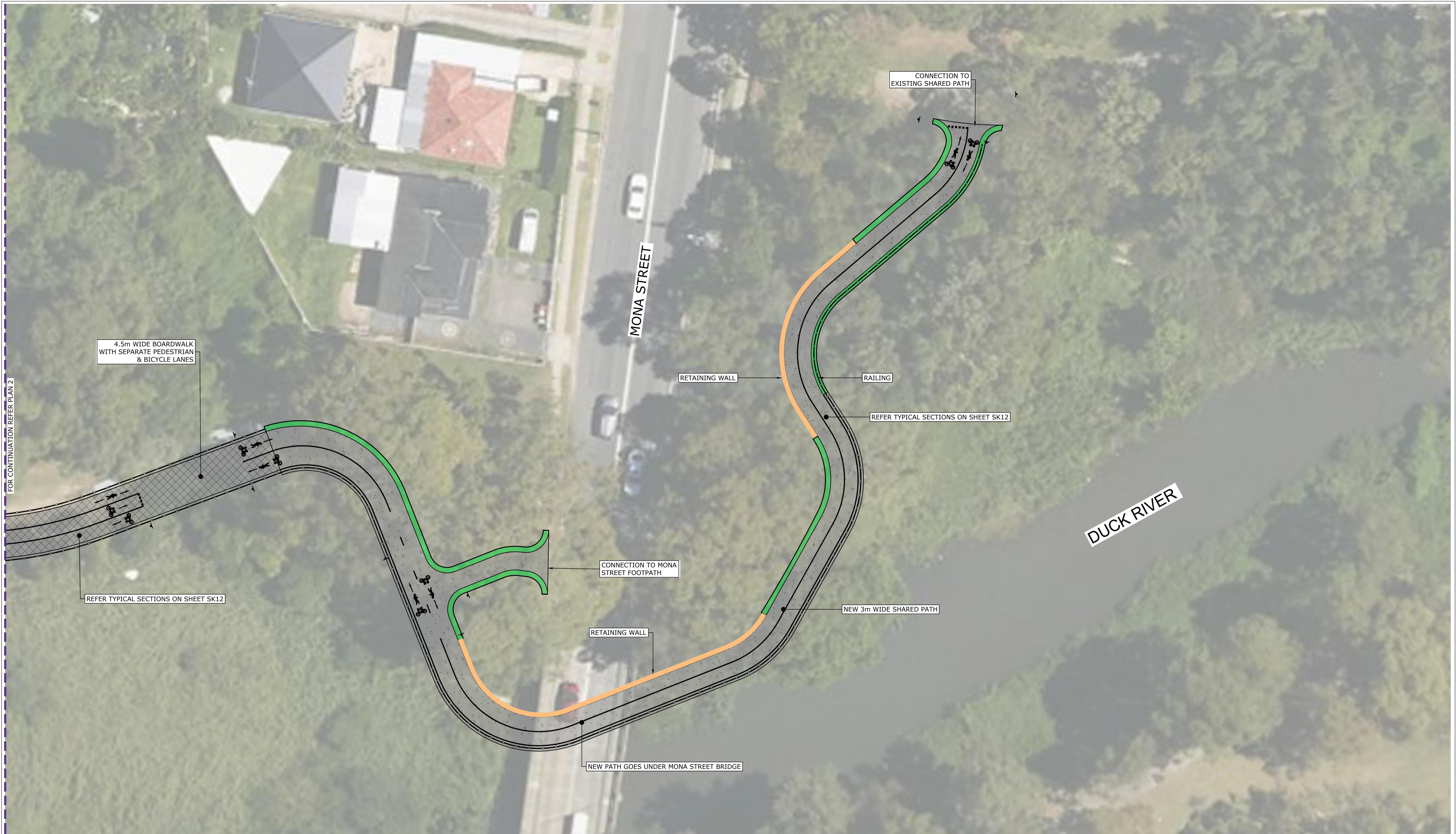
DUCK RIVER ACTIVE TRANSPORT LINK
SOUTH GRANVILLE NSW 2142
COMMUNITY CONSULTATION PLANS
GENERAL ARRANGEMENT PLAN

FILENAME:	PROJECT NUMBER	DRAWING NUMBER	REVISION
222052_CC02.DWG	222052	CC02	A

REV	REVISION / AMENDMENT / REASON FOR ISSUE	DATE	DES.	DWN.
A	REVISED COMMUNITY CONSULTATION ISSUE	14.08.23	NS	NS

© TONKIN CONSULTING

T:\2022\222052 DUCK RIVER - CUMBERLAND COUNCIL\4_WORKING\1 CAD\4 SKETCHES\222052_CC02.DWG -CC02- (14-08-23 4:06:21PM)



FOR CONTINUATION REFER PLAN 2

4.5m WIDE BOARDWALK WITH SEPARATE PEDESTRIAN & BICYCLE LANES

REFER TYPICAL SECTIONS ON SHEET SK12

MONA STREET

RETAINING WALL

RAILING

REFER TYPICAL SECTIONS ON SHEET SK12

CONNECTION TO EXISTING SHARED PATH

DUCK RIVER

CONNECTION TO MONA STREET FOOTPATH

NEW 3m WIDE SHARED PATH

RETAINING WALL

NEW PATH GOES UNDER MONA STREET BRIDGE

THIS DRAWING IS TO BE VIEWED IN COLOUR AS SOME FEATURES / SYMBOLS ARE DIFFERENTIATED BY COLOUR. DRAWING NOT TO BE RELIED ON IF PRINTED IN GREYSCALE.

0 2 4 8 12
1 : 200m (A1) - 1 : 400m (A3)

100mm ON ORIGINAL DRAWING - DO NOT SCALE DRAWING

SHEET SIZE
A1

COORDS: MGA2020 GDA2020 Z56
DATUM: ALL LEVELS TO A.H.D.

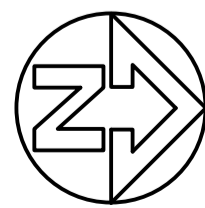
SCALE: 1:200

SURVEYED: PROJECT SURVEYORS
SURVEY DATE: 02.02.2023

APPROVED / PROJECT LEADER

REV	AMENDMENT / REASON FOR ISSUE	DATE	DES.	DWN.
A	REVISED COMMUNITY CONSULTATION ISSUE	14.08.23	NS	NS

NICHOLAS STEPHENS



tonkin.com.au

NOT FOR CONSTRUCTION

CUMBERLAND CITY COUNCIL

DUCK RIVER ACTIVE TRANSPORT LINK
SOUTH GRANVILLE NSW 2142
COMMUNITY CONSULTATION PLANS
PLAN 1 OF 3

FILENAME:	PROJECT NUMBER	DRAWING NUMBER	REVISION
222052_CC03.DWG	222052	CC03	A



FOR CONTINUATION REFER PLAN 3

FOR CONTINUATION REFER PLAN 3

FOR CONTINUATION REFER PLAN 1

HORLYCK RESERVE

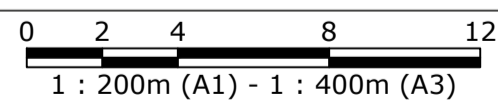
RAILING

4.5m WIDE PATHWAY WITH SEPARATE PEDESTRIAN & BICYCLE LANES

4.5m WIDE PATH WITH SEPARATE PEDESTRIAN & BICYCLE LANES

4.5m WIDE BOARDWALK WITH SEPARATE PEDESTRIAN & BICYCLE LANES

THIS DRAWING IS TO BE VIEWED IN COLOUR AS SOME FEATURES / SYMBOLS ARE DIFFERENTIATED BY COLOUR. DRAWING NOT TO BE RELIED ON IF PRINTED IN GREYSCALE.



100mm ON ORIGINAL DRAWING - DO NOT SCALE DRAWING

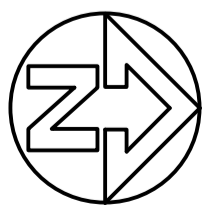
SHEET SIZE
A1

COORDS: MGA2020 GDA2020 Z56
DATUM: ALL LEVELS TO A.H.D.

SCALE: 1:200

SURVEYED: PROJECT SURVEYORS
SURVEY DATE: 02.02.2023
APPROVED / PROJECT LEADER

NICHOLAS STEPHENS



NOT FOR CONSTRUCTION

CUMBERLAND CITY COUNCIL

DUCK RIVER ACTIVE TRANSPORT LINK
SOUTH GRANVILLE NSW 2142
COMMUNITY CONSULTATION PLANS
PLAN 2 OF 3

REV	AMENDMENT / REASON FOR ISSUE	DATE	DES.	DWN.
A	REVISED COMMUNITY CONSULTATION ISSUE	14.08.23	NS	NS

FILENAME:	PROJECT NUMBER	DRAWING NUMBER	REVISION
222052_CC04.DWG	222052	CC04	A

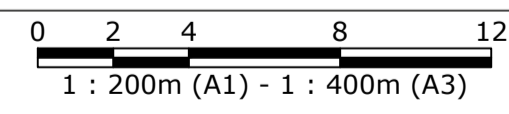


FOR CONTINUATION REFER PLAN 2

FOR CONTINUATION REFER PLAN 2

THIS DRAWING IS TO BE VIEWED IN COLOUR AS SOME FEATURES / SYMBOLS ARE DIFFERENTIATED BY COLOUR. DRAWING NOT TO BE RELIED ON IF PRINTED IN GREYSKALE.

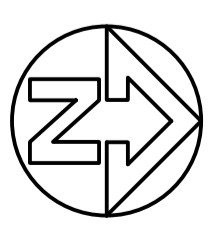
NOT FOR CONSTRUCTION



100mm ON ORIGINAL DRAWING - DO NOT SCALE DRAWING

SHEET SIZE
A1

COORDS: MGA2020 GDA2020 Z56
DATUM: ALL LEVELS TO A.H.D.
SCALE: 1:200
SURVEYED: PROJECT SURVEYORS
SURVEY DATE: 02.02.2023
APPROVED / PROJECT LEADER
NICHOLAS STEPHENS



REV	AMENDMENT / REASON FOR ISSUE	DATE	DES.	DWN.
A	REVISED COMMUNITY CONSULTATION ISSUE	14.08.23	NS	NS

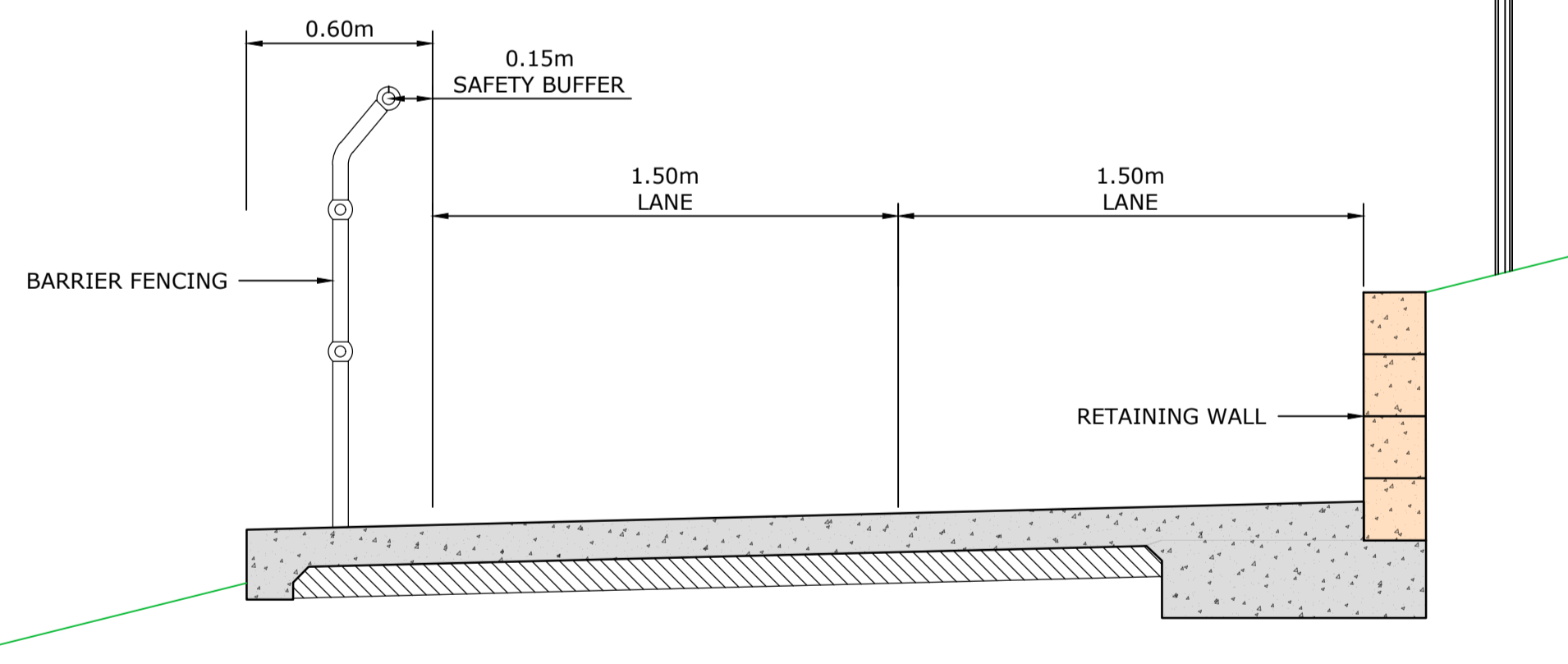
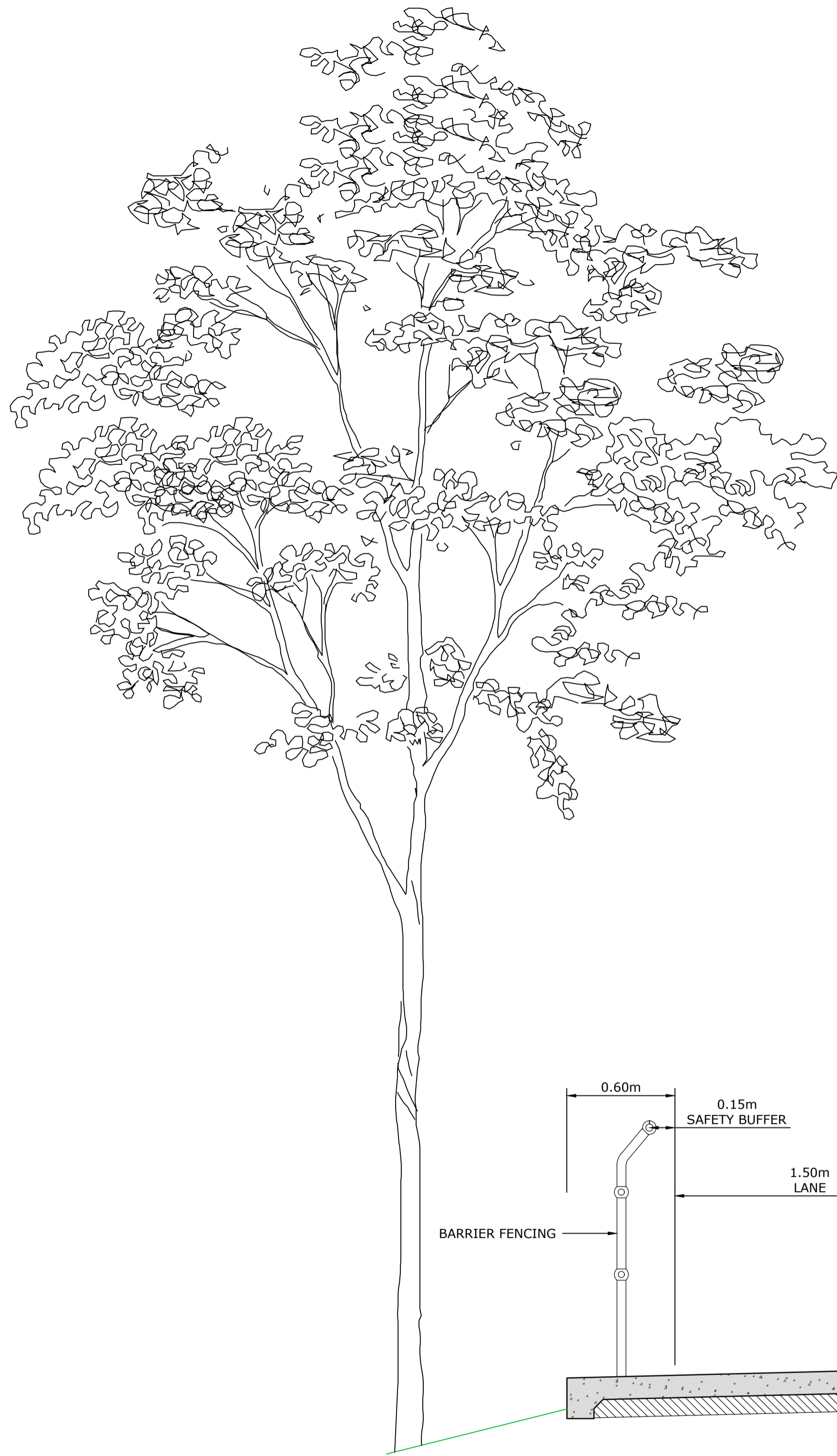
© TONKIN CONSULTING



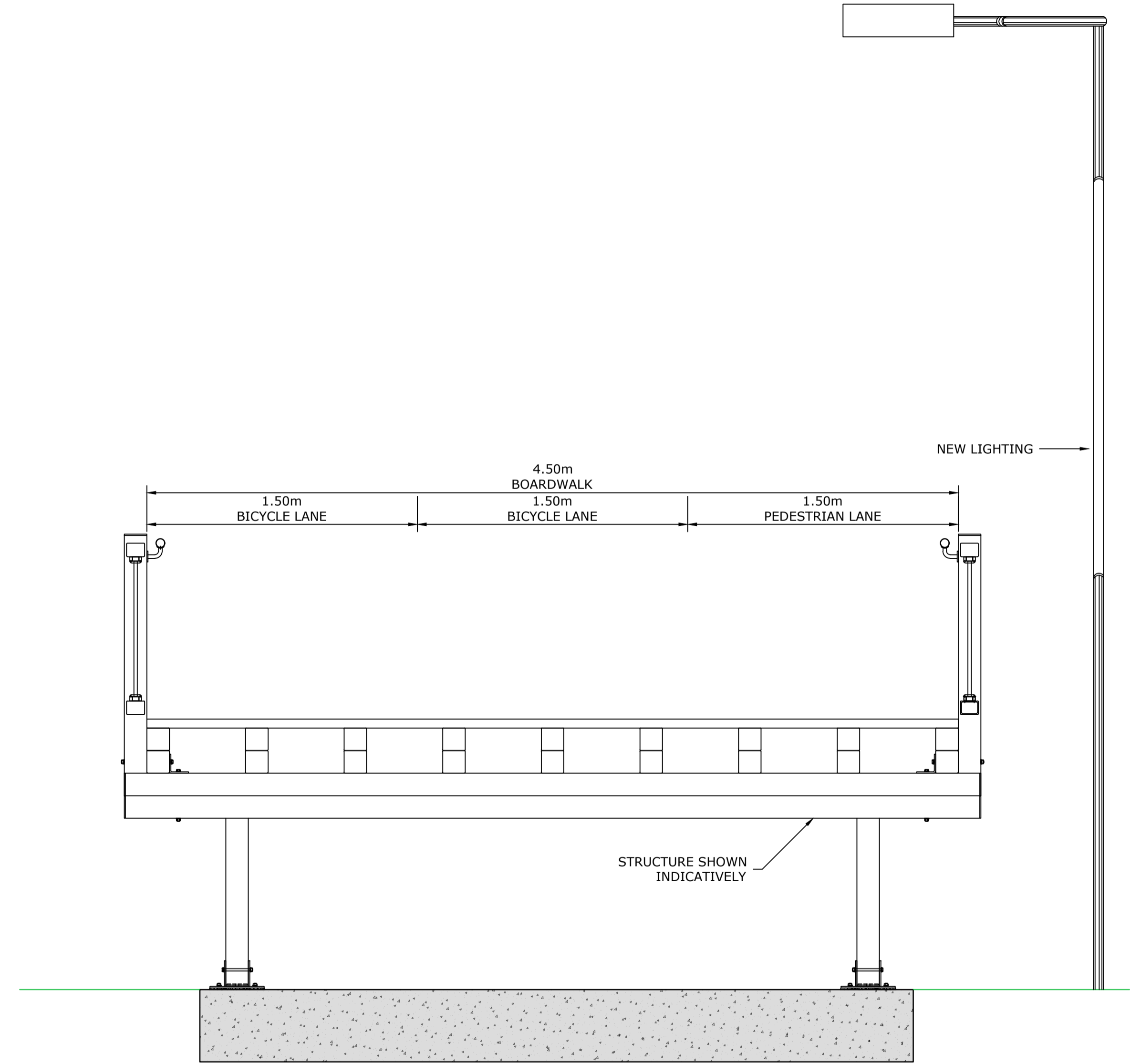
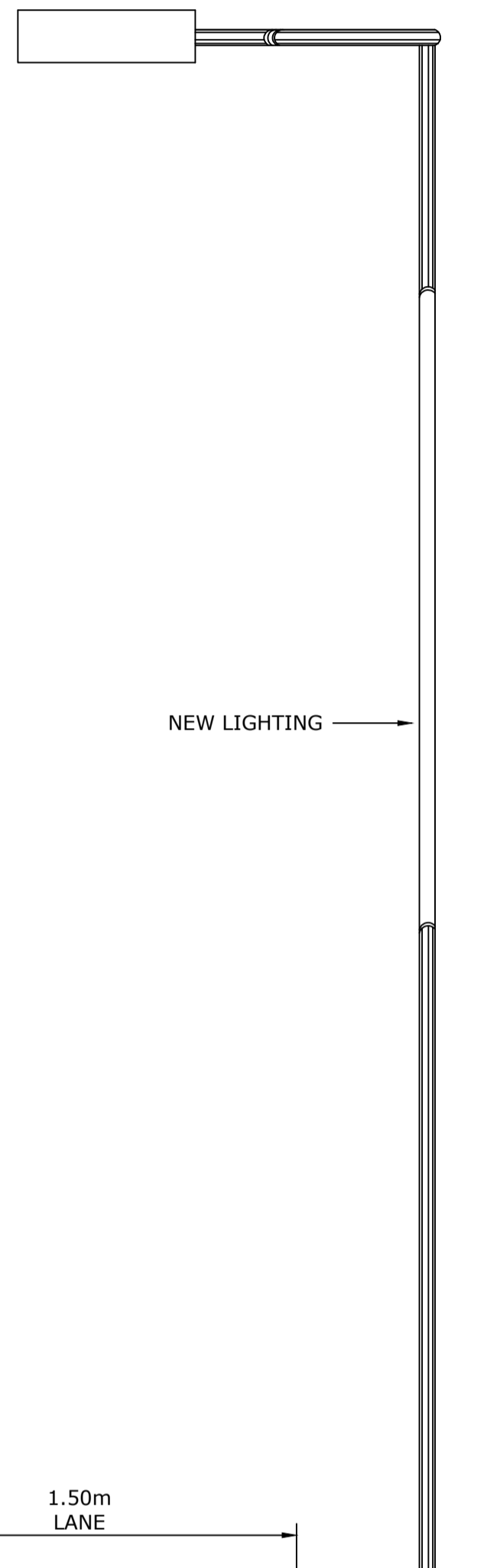
CUMBERLAND CITY COUNCIL

DUCK RIVER ACTIVE TRANSPORT LINK
SOUTH GRANVILLE NSW 2142
COMMUNITY CONSULTATION PLANS
PLAN 3 OF 3

FILENAME:	PROJECT NUMBER	DRAWING NUMBER	REVISION
222052_CC05.DWG	222052	CC05	A



CONCRETE PATH - TYPICAL SECTION



BOARDWALK - TYPICAL SECTION

THIS DRAWING IS TO BE VIEWED IN COLOUR AS SOME FEATURES / SYMBOLS ARE DIFFERENTIATED BY COLOUR. DRAWING NOT TO BE RELIED ON IF PRINTED IN GREYSKALE.

NOT FOR CONSTRUCTION

0 0.2 0.4 0.8 1.2
1 : 20m (A1) - 1 : 40m (A3)

100mm ON ORIGINAL DRAWING - DO NOT SCALE DRAWING

SHEET SIZE
A1

COORDS: MGA2020 GDA2020 Z56
DATUM: ALL LEVELS TO A.H.D.

SCALE: 1:20

SURVEYED: PROJECT SURVEYORS
SURVEY DATE: 02.02.2023

APPROVED / PROJECT LEADER

REV	AMENDMENT / REASON FOR ISSUE	DATE	DES.	DWN.
A	REVISED COMMUNITY CONSULTATION ISSUE	14.08.23	NS	NS

NICHOLAS STEPHENS



tonkin.com.au

CUMBERLAND CITY COUNCIL

DUCK RIVER ACTIVE TRANSPORT LINK
SOUTH GRANVILLE NSW 2142
COMMUNITY CONSULTATION PLANS
TYPICAL SECTIONS

FILENAME:	PROJECT NUMBER	DRAWING NUMBER	REVISION
222052_CC06.DWG	222052	CC06	A

PUBLIC LIGHTING

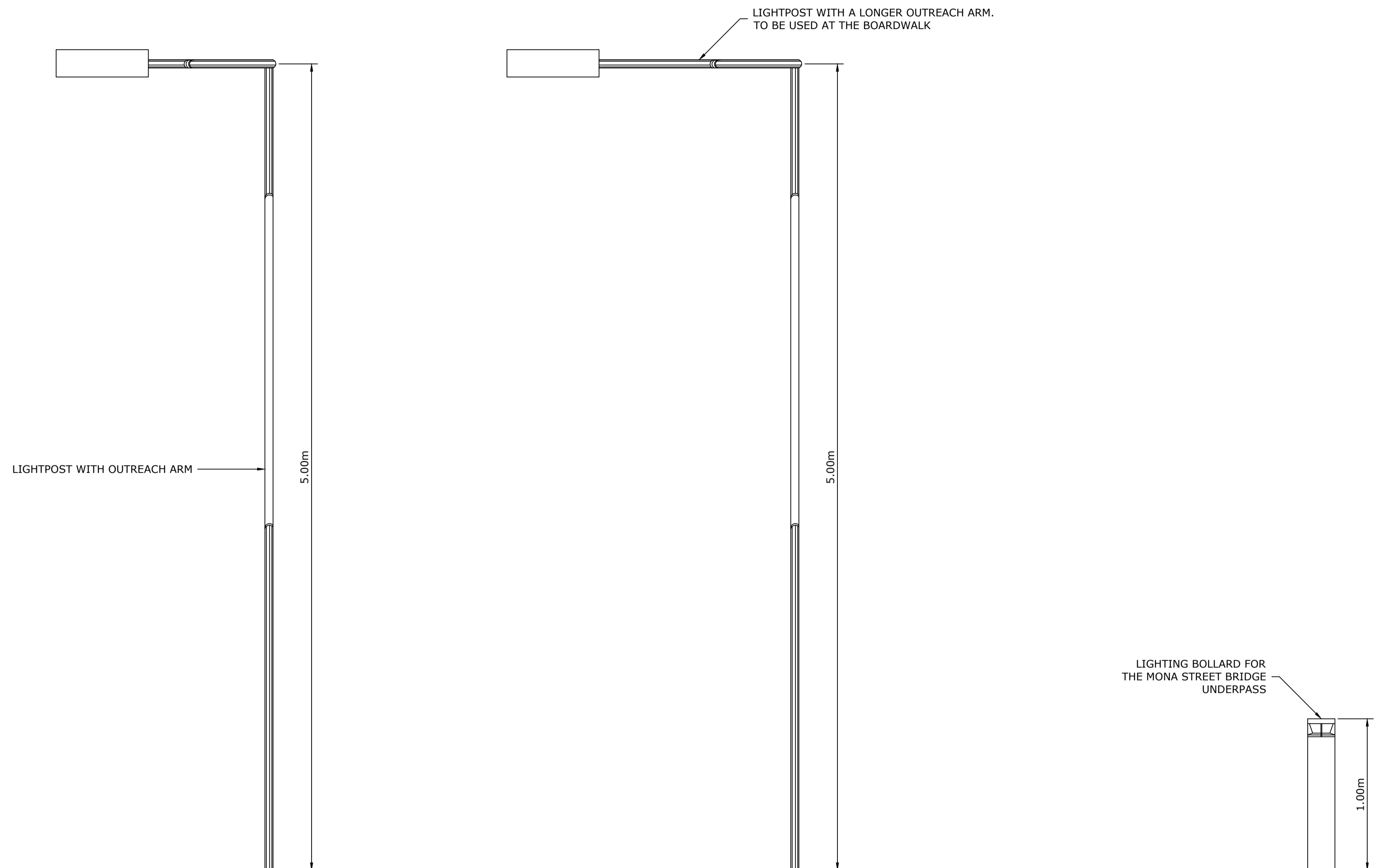
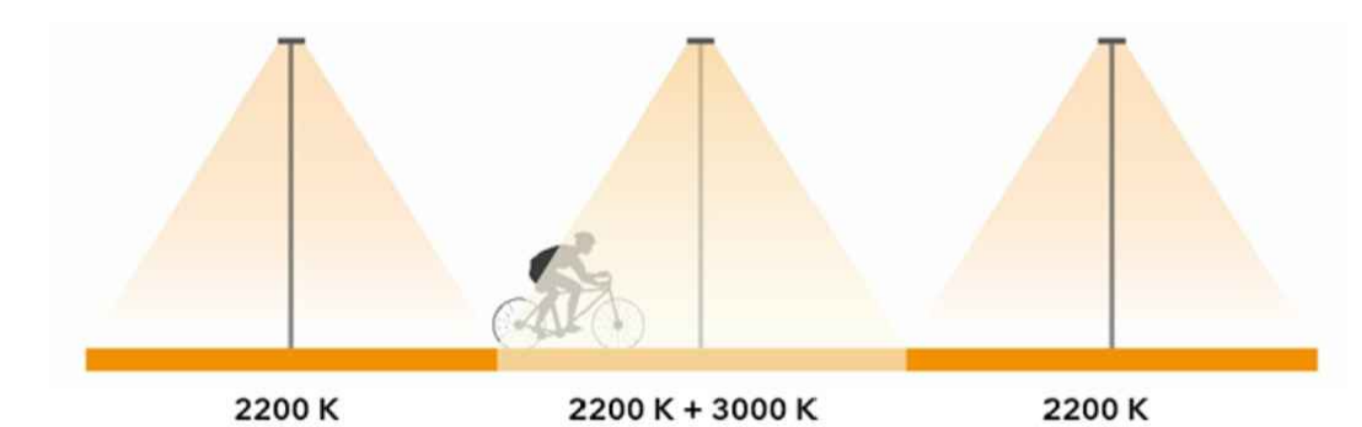
NEW PUBLIC LIGHTING WILL BE PROVIDED ALONG THE ENTIRE ALIGNMENT. MOST OF THIS NEW LIGHTING WILL BE PROVIDED BY LIGHT POSTS WITH OUTREACH ARMS.

LIGHTING WILL ALSO BE PROVIDED FOR THE CONNECTIONS BETWEEN THE NEW PATH AND MONA STREET & BORONIA STREET.

AT THE BOARDWALK, THESE LIGHT POSTS WILL BE FREESTANDING WITH LONGER ARMS.

AT THE MONA STREET BRIDGE UNDERPASS, LIGHTING WILL INSTEAD BE PROVIDED BY LIGHTING BOLLARDS.

IN ACCORDANCE WITH THE NATIONAL LIGHT POLLUTION GUIDELINES, THE NEW LIGHTING WILL BE WARM-COLOURED AND DIM, ONLY BRIGHTENING WHEN MOVEMENT IS DETECTED. THIS HELPS MINIMISE THE IMPACT OF THE LIGHTING ON NOCTURNAL ANIMALS.



THIS DRAWING IS TO BE VIEWED IN COLOUR AS SOME FEATURES / SYMBOLS ARE DIFFERENTIATED BY COLOUR. DRAWING NOT TO BE RELIED ON IF PRINTED IN GREYSKALE.

NOT FOR CONSTRUCTION

CUMBERLAND CITY COUNCIL

DUCK RIVER ACTIVE TRANSPORT LINK
SOUTH GRANVILLE NSW 2142
COMMUNITY CONSULTATION PLANS
LIGHTING INFORMATION

FILENAME:	PROJECT NUMBER	DRAWING NUMBER	REVISION
222052_CC07.DWG	222052	CC07	A



tonkin.com.au

0 0.2 0.4 0.8 1.2
1 : 20m (A1) - 1 : 40m (A3)

100mm ON ORIGINAL DRAWING - DO NOT SCALE DRAWING

SHEET SIZE
A1

COORDS: MGA2020 GDA2020 Z56
DATUM: ALL LEVELS TO A.H.D.

SCALE: 1:20

SURVEYED: PROJECT SURVEYORS
SURVEY DATE: 02.02.2023

APPROVED / PROJECT LEADER

REV	A	REVISD COMMUNITY CONSULTATION ISSUE AMENDMENT / REASON FOR ISSUE	14.08.23	NS	NS	NICHOLAS STEPHENS
			DATE	DES.	DWN.	