

Westmead South Proposed Built Form Typologies

Low



Low density housing includes single detached houses and in some areas, dual occupancies (duplexes). They range from 1-2 storeys in height.

This style of housing maintains and enhances the low-density character of an area, including increased landscaping and backyards for residents.

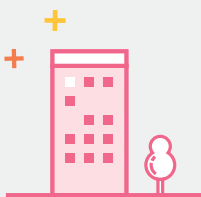
Medium



Medium density housing includes dual occupancies, townhouses and terrace housing. They range between 2-3 storeys in height.

This style of housing offers sustainable living for growing families, singles and empty nesters.

Medium High



Medium-high density housing includes residential apartment buildings, ranging between 4-6 storeys in height.

This density would provide housing near facilities for the day to day needs of residents, such as cafes or retail stores in key nodes.

Medium-high density housing provides the community with housing choice and affordability and is important in creating a diverse neighbourhood.

High



High density housing includes residential towers and/or apartment buildings, ranging between 7-15 storeys in height.

High density housing offers convenience, accessibility, and active travel opportunities near jobs or education. Higher density housing is located primarily along key centres or transport corridors, making it easier for residents to travel around and beyond the neighbourhood.